

This Kit Includes:



1 collection tube



1 pipette



1 collection cup

OR



1 pee canter



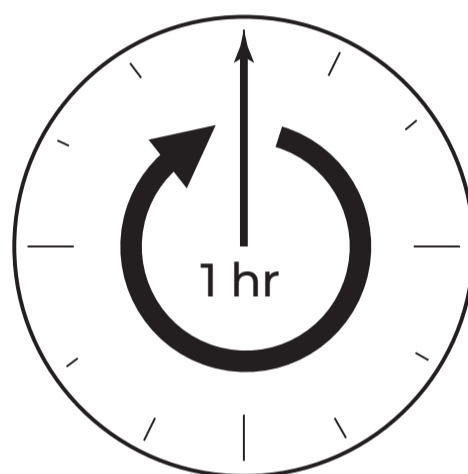
1 specimen bag
(with absorbent pad)

READ FIRST

1. Read all instructions thoroughly before collecting your specimens.
2. Do not drink alcohol on the day of collection.
3. Do not collect specimens during menstruation or within 24 hours of intercourse.
4. Collection tubes may contain a liquid preservative. **DO NOT EMPTY LIQUID PRESERVATIVE FROM THE COLLECTION TUBES IF PRESENT.**

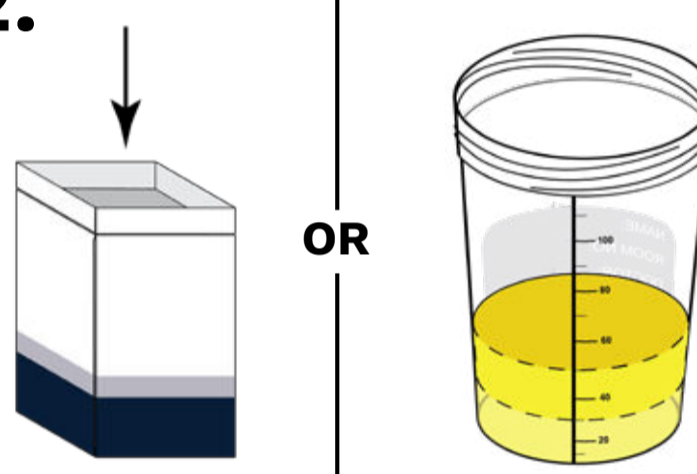
TO PREVENT REJECTED SPECIMENS, PLEASE READ ALL INSTRUCTIONS BEFORE BEGINNING COLLECTION

1.



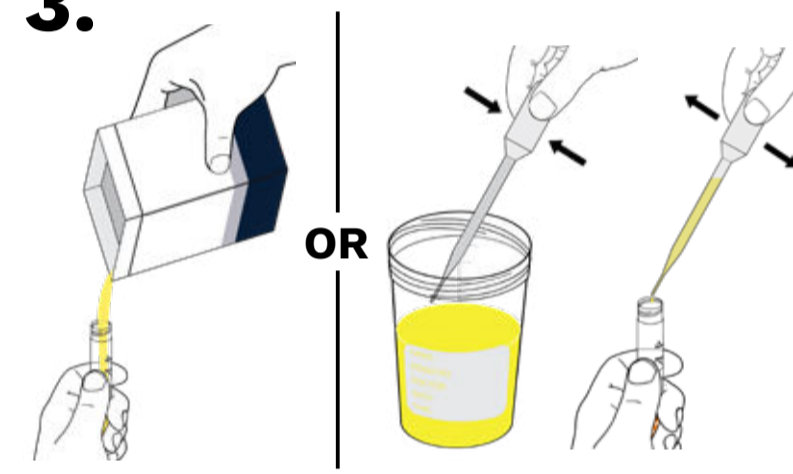
Do not urinate for at least 1 hour prior to collection. Using first morning urine is best.

2.



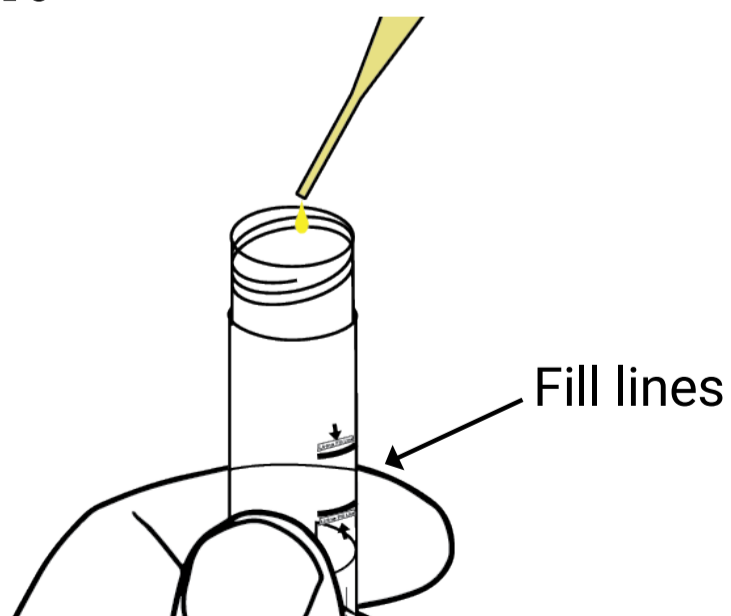
Urinate directly into the pee canter or collection cup, filling between 1/3 and 1/2.

3.



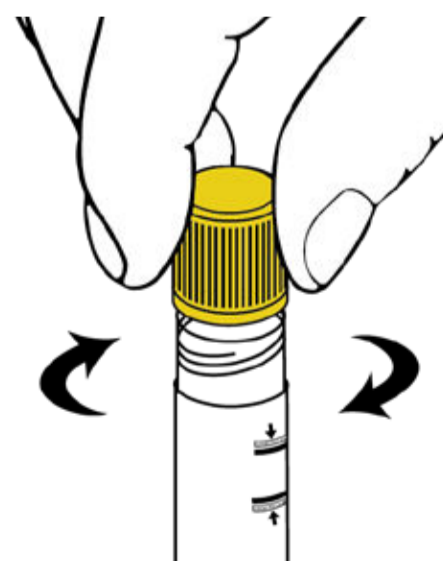
Pour from the pee canter or use the pipette to transfer urine from the collection cup into the collection tube(s) marked with an **ORANGE "URINE" LABEL.**

4.



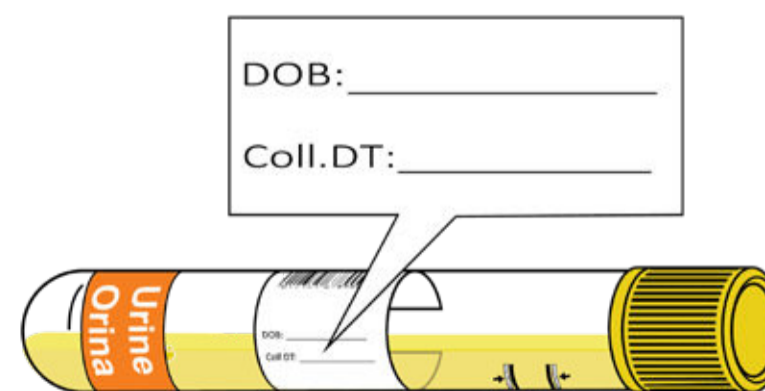
Fill the collection tube(s) until the combined liquid is between the designated fill lines. **Do not fill tube past the maximum fill line or specimen will be rejected.**

5.



Place lid onto the collection tube and ensure it is closed evenly and tightly.

6.



Write your date of birth and the specimen collection date (today's date) in MM/DD/YYYY format onto the tube in the designated areas.

7.



Place specimen into an empty biohazard bag with the absorbent pad and ensure the seal is closed completely.